



**EMBASSY  
OF DENMARK**  
*Mexico City*

**JUNE 2026**

---

# **SERVICE PROVIDER CATALOGUE**

**MEXICO**



# TABLE OF CONTENTS

<b>BUSINESS SERVICES / CONSULTANCIES .....</b>	<b>3</b>
<b>ALTIOS .....</b>	4
<b>INBRIGMEX .....</b>	5
<b>JBC BRANDS .....</b>	6
<b>NEWMARKETS .....</b>	7
<b>TOTZPA .....</b>	8
<b>ZEA CONSULTORIA SOCIAL .....</b>	9
<b>LAW FIRMS / LEGAL CONSULTANCY .....</b>	<b>10</b>
<b>BAKER MCKENZIE .....</b>	11
<b>CROWE .....</b>	12
<b>GREENBERG TRAURIG .....</b>	13
<b>TRANSLATION SERVICES .....</b>	<b>14</b>
<b>ALEJANDRA R. OLVERA .....</b>	15
<b>ANDREA ESQUIVEL SANDOVAL / TRANSTUDIO .....</b>	16
<b>GUILLERMO CASILLAS .....</b>	17
<b>IMPORT / LOGISTICS .....</b>	<b>18</b>
<b>AOLM .....</b>	19
<b>SCAN GLOBAL LOGISTICS .....</b>	20
<b>RECRUITMENT .....</b>	<b>21</b>
<b>SLATER CONSULT .....</b>	22

# **BUSINESS SERVICES / CONSULTANCIES**



---

# ALTIOS

Avenida Oaxaca 96, Int. 204 A

Colonia Roma Norte, Alc. Cuauhtémoc 06700

Mexico City, CDMX

Mexico



<http://altios.com/mexico/>

ALTIOS offers extensive industry expertise and integrated resources on a global scale, offering business-oriented solutions delivered by a team of experts working from a unique global network of offices around the world. A single point of contact to coordinate and manage all in-country services and operations, one partner for all your business needs, anywhere. Leading international advisory firm for SME's and mid-cap companies wanting to expand globally.

- DEVELOP: Define international expansion goals, potential, roadmap, and financing.
- EXPAND: Build networks, conduct market research, and form strategic partnerships.
- ESTABLISH: Support with HR, recruitment, and setting up/managing foreign subsidiaries.
- INVEST: Grow through new operations or acquisitions.

ALTIOS has an integrated global platform of 40 offices in 22 countries and more than 750 strategically positioned professionals.

---

## CONTACT

---



**MARGAUX LOUSTALAN**  
Managing Director - Americas

[m.loustalan@altios.com](mailto:m.loustalan@altios.com)  
+ 52 55 5274 5370

---

# INBRIGMEX

Av. Insurgentes Sur 1392

Insurgentes Mixcoac

Benito Juárez, 03920, Mexico City, CDMX

Mexico



[www.inbrigmex.com](http://www.inbrigmex.com)

INBRIGMEX is a consulting firm specializing in attracting foreign investment to Mexico, offering comprehensive advisory services in legal, accounting, commercial, and business matters. The team has extensive experience working with companies and governments to facilitate successful investment projects. INBRIGMEX has profiles and experts on market entry and investment consultancy with experience assisting foreign companies to set-up and grow their business in Mexico, serving as a strategic bridge for European and Nordic capital. Their multidisciplinary partners design highly tailored "soft-landing" frameworks that mitigate expansion risks and accelerate market growth. INBRIGMEX brings decades of proven leadership navigating complex, highly regulated industries, with specialized expertise in mining, defense, healthcare, mobility, transport, manufacturing, and corporate law.

Services provided include:

Company incorporation, legal and accounting services, governmental bidding and contract advisory, financial consulting and strategic alliances, import/export advisory, commercialization of goods, regulatory compliance, market strategies, migration visas, corporate law, labor law & trademarks.

---

## CONTACT

---



**ABRAHAM MORALES**

Partner

[abraham@inbrigmex.com](mailto:abraham@inbrigmex.com)

+ 52 56 3364 7171

---

# JBC BRANDS

Rio Tiber 48

Colonia Cuauhtémoc, 06500

Mexico City, CDMX

México



[www.jbcbrands.com.mx](http://www.jbcbrands.com.mx)

JBC Brands is a Mexican company specialized in the strategic development, distribution, and positioning of international brands in Mexico. With deep expertise in retail, pharmaceutical, and department store channels, we offer tailored solutions for wellness, health, hygiene, beauty, and cosmetics brands. We understand local regulations and import processes, have extensive knowledge of the Mexican market, and provide nationwide distribution to ensure successful market entry and long-term growth.

---

## CONTACT

---



**BARUSH JOFFRE**  
Commercial Director

[Sales@jbcbrands.com.mx](mailto:Sales@jbcbrands.com.mx)  
+ 52 55 8093 1486

---

# NEWMARKETS

Avenida Yucatán 54, Int. 1424. CP 06700

Colonia Roma Norte, Alc. Cuauhtémoc

Mexico City, CDMX

Mexico



[www.newmarkets.com.mx](http://www.newmarkets.com.mx)

NEWMARKETS is an international business development company which supports organizations / embassies (trade & investments) / Chambers of Commerce / Export's Association and individual companies to grow in the Mexican and LATAM markets. We are located in Mexico City with a large experience developing commercial activities in different sectors such as trade missions, business agendas, business development, B2B-meetings, showrooms, commercial representation, market reports, or basic list of contacts. Our mission is to provide high-quality landing and commercial business development services for companies looking to do business in or with Mexico/LATAM. Furthermore, we also work as commercial developers for companies that require area managers located in our region with tailored made formulas to enrich your sales team abroad. We have broad experience in many sectors including agriculture, food and beverages, industrial, energy, franchises, IT, start-ups, pharma, fashion, wood, fish, tourism, and the list goes on.

---

## CONTACT

---



**LLOYD DE VILLAMOR**  
Director, Co-Founder and  
Partner

[Lloyd@newmarkets.com.mx](mailto:Lloyd@newmarkets.com.mx)  
+ 52 55 9109 0101



**ERNESTO WLASIUK**  
Managing Partner

[Ernesto@newmarkets.com.mx](mailto:Ernesto@newmarkets.com.mx)  
+ 52 55 1660 8730

---

# TOTZPA

Calle Gob. Protasio Tagle 104

Colonia San Miguel Chapultepec I, Alc. Miguel Hidalgo 11850

Mexico City, CDMX

Mexico



<https://totzpa.com/>

The Totzpa Consulting team supports you at every stage of your development in Mexico and Latin America. Totzpa offers the advantage of local monitoring, with a representative integrated directly into your team—without the administrative burden. Totzpa’s clients come from diverse sectors, including industry, consumer goods, and new technologies, and focuses on building strong, long-term relationships with both foreign and local partners.

Services provided include:

- Business development: Local sales support, prospecting, distributor management, and strategic opportunities.
- Marketing: Strategic analysis and localization of your offer and tools.
- Logistics: Transport solutions, coordination, and customs support.
- Human resources: Talent recruitment, job descriptions, and interview management.
- Establishing local presence: Legal/admin support, location strategy, and premises search.

Totzpa is an active member of the local economic network. Get in touch—and explore your ambitions in Latin America and create new opportunities for your business!

---

## CONTACT

---



**THOMAS GAUQUELIN**

Director and Founder

[Thomas@totzpa.com](mailto:Thomas@totzpa.com)

+ 52 55 7205 9590

---

# ZEA CONSULTORIA SOCIAL



Miguel Laurent 923

Colonia Santa Cruz Atoyac, Del. Benito Juárez 03310

Mexico City, CDMX

Mexico

<https://zeainvestigacion.com/>

ZEa Consultoría Social is a consultancy firm specializing in helping companies develop and implement social management practices and community engagement strategies, supported by robust methodologies aligned with the highest international standards and tailored to the Mexican social context.

Social studies for investments and business activities include:

- Social Impact Assessment
- Social Baseline Studies and identification of social risks for investments
- Stakeholder Mapping
- Design of Social Management Plans
- Community Engagement Strategies
- Human Rights Impact Assessment
- Social Investment and Corporate Social Responsibility Strategies

---

## CONTACT

---



**ANA SUÁREZ ZAMUDIO**

Managing Director

[ana.suarez@zeasocial.com](mailto:ana.suarez@zeasocial.com)

[info@zeasocial.com](mailto:info@zeasocial.com)

Office: + 52 55 5131 3971

Mobile: + 52 55 1948 0131

# **LAW FIRMS / LEGAL CONSULTANCY**



---

# BAKER MCKENZIE

Pedregal 24 floor 12, Lomas Virreyes

Col. Molino del Rey, Alc. Miguel Hidalgo, 11040

Mexico City, CDMX

Mexico

**Baker  
McKenzie.**

<https://www.bakermckenzie.com/en/>

As one of the largest fully integrated networks of offices, clients of Baker McKenzie benefit from our collaboration across borders, disciplines, and markets to provide the best possible advice efficiently and seamlessly. Baker McKenzie quickly assembles cross-border teams who combine local and industry focus with an international perspective to provide practical, integrated legal advice for all clients.

Office locations – Mexico City, Monterrey, Tijuana, Juarez and Guadalajara.

Practice groups – Transactional (corporate, contracts, real estate, banking, finance), Employment (social security, immigration), Tax (compliance, reorgs, audits, transfer pricing), Environmental, Customs & Trade, Litigation and Compliance, Antitrust, Energy, Regulatory, IP, IT and Data Privacy.

Industry groups – Technology and Telecom, Manufacturing, Healthcare and Life Science, Mining and Infrastructure, Consumer Goods and Retail.

---

## CONTACT

---



**ERIK GUTIERREZ-ZUNIGA**

Partner, Corporate M&A

[Erik.Gutierrez@bakermckenzie.com](mailto:Erik.Gutierrez@bakermckenzie.com)

+ 52 55 5279 2943

---

# **CROWE**



Nuevo Polanco

Av. Miguel de Cervantes Saavedra No. 193 Piso 7-702,

Col. Granada 11520, Miguel Hidalgo

Mexico City, CDMX

Mexico

<https://www.crowe.com/mx/en-us>

Crowe's leaders work with governments, regulatory bodies and industry groups to shape the future of the profession worldwide. Their exceptional knowledge of business, local laws and customs provide lasting value to clients undertaking international projects.

Crowe provides local (with 31 offices in Mexico) and global reach on a personal scale. Firms are focused on the future and the client experience, working with clients to build something valuable, substantial, and enduring. Close working relationships are at the heart of our effective service delivery.

At Crowe, our professionals all share one commitment, to deliver excellence.

---

## **CONTACT**

---



**MIGUEL MORENO TRIPP, PHD**

Socio – Global Corporate Advisors

[miguel.moreno@crowe.mx](mailto:miguel.moreno@crowe.mx)

---

# GREENBERG TRAUIG



Paseo de la Reforma NO. 265 PH1

Col. Cuauhtémoc, Alc. Cuauhtémoc

Mexico City, CDMX

Mexico

<https://www.gtlaw.com/en>

Greenberg Traurig, LLP (GT) has approximately 3,100 attorneys across 51 locations in the United States, Europe, the Middle East, Latin America, and Asia. Its global platform enables the firm to deliver innovative, strategic legal services across industries and borders. Recognized as a 2024 BTI “Leading Edge Law Firm,” GT is consistently ranked among the top firms in the Am Law Global 100 and NLJ 500 and is known for its philanthropy, culture, innovation, and pro bono work. Greenberg Traurig Mexico is a multidisciplinary firm that assists national and international clients with business operations in Mexico. Founded in 2011, the office covers more than 20 practice areas and provides strategic legal advice across traditional and emerging industries. Its work on numerous landmark transactions has earned consistent recognition from leading legal directories, including Chambers, Latin Lawyer, The Legal 500, and IFLR1000.

## Services provided include:

An integrated approach: Our multidisciplinary team combines experience in business, law, and government to meet the evolving needs of global enterprises. Clients benefit from access to GT’s integrated global network of professionals who collaborate closely to deliver consistent, results-driven strategies.

Urgent, optimistic problem-solving: At GT, we focus on fast, innovative, and business-oriented legal solutions. Our culture emphasizes dedication, efficiency, and responsiveness through lean staffing, strategic planning, and flexible billing structures tailored to client needs.

New technologies: GT is an early adopter of emerging technologies, including customized AI systems that enhance efficiency, data analysis, and information management.

---

## CONTACT

---



### LESLIE PALMA

Shareholder  
Labor & Employment and  
Immigration

[palmal@gtlaw.com](mailto:palmal@gtlaw.com)  
+ 52 55 5029 0000



### LUIS CORTÉS PANAMEÑO

Shareholder  
Corporate, Compliance,  
Regulatory and Supply Chain

[cortesl@gtlaw.com](mailto:cortesl@gtlaw.com)  
+ 52 55 5029 0000

# TRANSLATION SERVICES



---

# ALEJANDRA R. OLVERA

Tlalnepantla, Estado de México

Alex R. Olvera  
traducción · translation

[www.lexolvera.com](http://www.lexolvera.com)

Alejandra R. Olvera is an expert translator (*perito traductora*), authorized by the Mexican Judiciary. She works, since 2008, as a translator and promoter of Scandinavian languages and literature. Alex completed graduate studies in Translation at the Universitat Autònoma de Barcelona and Ametli's Training Program in Literary and Humanistic Translation. She is the current president of the Mexican Literary Translators Association (Asociación Mexicana de Traductores Literarios, Ametli) and has been a scholarship holder for the translators' programmes of the Gothenburg and Helsinki Book Fairs, the Norwegian Literature Festival in Lillehammer and NORLA's *Oversetterhotel* in Oslo, Norway.

---

## CONTACT

---



### **ALEX R. OLVERA**

*Perito traductora*; Translator and promoter of Scandinavian languages (among others)

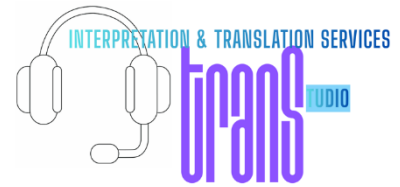
[info@lexolvera.com](mailto:info@lexolvera.com)

[ar.olvera@yahoo.dk](mailto:ar.olvera@yahoo.dk)

+ 52 55 2337 5325

---

# ANDREA ESQUIVEL SANDOVAL / TRANSTUDIO



Alonso Cano #122

Alfonso XIII

Mexico City, CDMX

Mexico

<https://www.linkedin.com/in/andrea-esquivel-4841011a/>

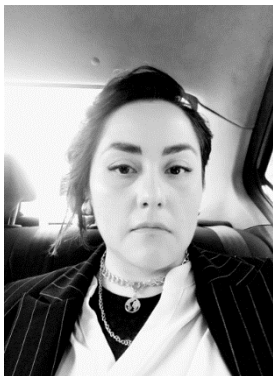
Andrea Esquivel Sandoval is an interpreter and translator with 15 years of national and international experience in different fields of knowledge, such as energy, medicine, humanities, technology, agriculture, pharmaceuticals, early childhood and education, diplomacy, among others. She studied interpretation and translation at the Instituto Superior de Intérpretes y Traductores (ISIT) in Mexico City.

Throughout her professional career she has provided simultaneous interpretation, interpretation equipment rental and translation services for the different Secretariats of the Mexican Government and also for Mexican and Danish companies and embassies, including the Danish Embassy in Mexico as well as the Embassy of Mexico in Denmark, which has allowed her to become familiar with the Danish context first-hand since 2018.

---

## CONTACT

---



### ANDREA ESQUIVEL SANDOVAL

Simultaneous interpretation and translation services. Professional license # 8399007

English, Spanish, Portuguese, and French (written translation)

[fogo.nostro@gmail.com](mailto:fogo.nostro@gmail.com)

+ 52 (1) (55) 55 2312 2592

---

# GUILLERMO CASILLAS

Polanco, Mexico City



Guillermo  
Casillas Islas  
Intérprete de conferencias



<https://www.linkedin.com/in/gcasillas3/>

Guillermo Casillas is a conference interpreter working in Spanish, English, and French, with experience in simultaneous, consecutive, and liaison interpreting across a wide range of international settings.

He has collaborated with government institutions, international organizations, embassies, such as the Danish Embassy in Mexico, and private sector clients, supporting high-level meetings, conferences, audits, and technical exchanges. His areas of expertise include diplomacy, human rights, sustainable development, agriculture, public health, judicial matters, and international cooperation.

Guillermo holds a degree in Interpretation from the Instituto Superior de Intérpretes y Traductores (ISIT), complemented by advanced training in French–Spanish interpretation and continuous professional development in legal, technical, and scientific matters. His solid academic background and ongoing specialization underpin a rigorous, accurate, and culturally nuanced approach to multilingual communication.

---

## CONTACT

---



### **GUILLERMO CASILLAS**

Conference interpreter

English, Spanish, and French

[g.casillas3@icloud.com](mailto:g.casillas3@icloud.com)

+ 52 (55) 1412 3999

# IMPORT / LOGISTICS



---

# AOLM

Bosque de Alisos #45 A. 1o. piso

Col. Bosques de las Lomas 05120

Mexico City, CDMX

Mexico



<https://aolm.org.mx/>

The Association of Logistics Operators of Mexico (AOLM) is an organization committed to the development of the logistics sector. It represents the interests of its member companies before various public and private entities at both national and international levels.

Legally established logistics operations companies provide reliable, high-quality services throughout the country. The AOLM collaborates with government authorities, partners with educational institutions, actively participates in various media—both print and digital—and maintains a presence at significant logistics events as a strategically.

---

## CONTACT

---



### **MÓNICA GARCÍA-ESCUDERO**

General Manager

[info@aolm.org.mx](mailto:info@aolm.org.mx)

+ 52 55 4445 8522

---

# SCAN GLOBAL LOGISTICS



Torre Optima

Avenida Paseo de las Palmas 405, 501-504

11000 Mexico City, CDMX

Mexico

**SCAN GLOBAL**  
LOGISTICS

[scangl.com](http://scangl.com)

Scan Global Logistics is a global logistics organization dedicated to helping businesses move goods efficiently, safely, and seamlessly across international markets. Headquartered in Copenhagen, Denmark, the company has a strong presence in Mexico through its offices in Guadalajara, Mexico City, and Monterrey.

With a robust infrastructure of more than 5,100 professionals across 60 countries and a network of over 220 offices worldwide, Scan Global Logistics provides comprehensive end-to-end logistics solutions. Its service portfolio includes international air, ocean, and road transportation, specialized customs clearance, and cross-border logistics services. The company also offers warehousing and distribution solutions, cargo insurance, and complex project logistics tailored to diverse industry needs.

---

## CONTACT

---



**FABRICIO GUERRERO MAUBERT**

Head of Sales Mexico

[fguer@scangl.com](mailto:fguer@scangl.com)

+ 52 55 9990 2380

+ 52 56 6216 8766

# RECRUITMENT



---

# SLATER CONSULT



Headquarter North America

SlaterConsult, LLC

Huntersville, North Carolina

USA

<https://www.slaterconsult.com/>

Slater Consult is an international recruitment and development agency founded in Denmark in 2015. From our offices in Denmark and the US, we serve our clients throughout Europe, North and South America. We partner closely with our clients to deliver tailored hiring solutions, and we specialize in industries such as defense, energy, advanced manufacturing, and tech. We support both emerging and established companies across international markets, helping them expand internationally and navigate growth with confidence.

## Language skills within the company

Danish, English, Spanish, German.

---

## CONTACT

---



### **KAROL COY CUBILLOS**

Recruitment & Business Development Consultant

[kac@slaterconsult.com](mailto:kac@slaterconsult.com)

+ 1 704 652-2090



**EMBASSY  
OF DENMARK**  
*Mexico City*

**JUNE 2026**

---

**LET US KNOW IF YOU NEED  
ANY HELP**

